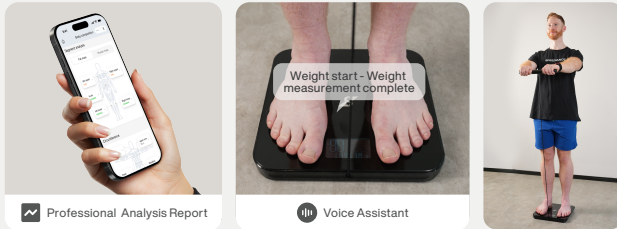


Accomplish your exercise goals



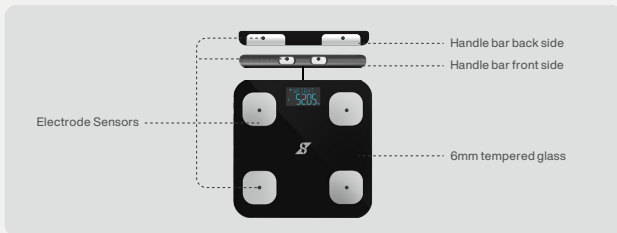
More Comprehensive and Accurate



Professional Analysis Report

Voice Assistant

8 high-precision Sensors for Professional Hand-to-Foot Measurement

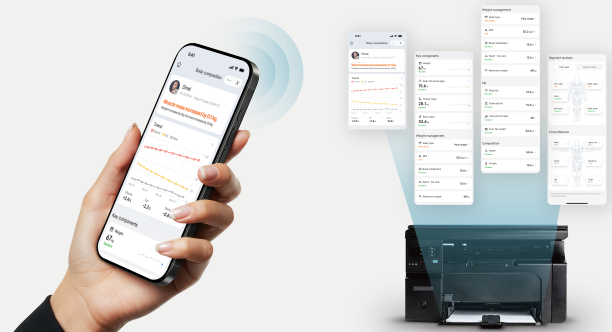


How to Operate 8 Electrodes



Generate a Body Composition Report

The phone connects to a printer via Bluetooth and can print paper reports



Speediance Smart Scale (WiFi)– Product Specifications

General Information	
Product Name	Speediance Smart Scale (WiFi)
Model	FG2211WBF
Dimensions	333 × 305 × 33.5 mm (including anti-slip pads, decorative cover, and handles)
Weight	<ul style="list-style-type: none"> ▪ Gross Weight: 2.64 kg (5.82 lbs) ▪ Net Weight: 2.33 kg (5.14 lbs)

Electrical Parameters	
Maximum Average Current	≤180 mA (non-voice mode)
Average Standby Current	≤60 μ A

Core Specifications	
Display	LED display with 25 mm character height
Power Supply	6V (AA batteries *4)
Environmental Conditions	<ul style="list-style-type: none"> ▪ Operating Temperature: 5°C to 35°C ▪ Operating Humidity: 40% RH to 85% RH ▪ Suggested Storage Temperature: -20°C to 60°C
Weighing Performance	<ul style="list-style-type: none"> ▪ Weight Range: 5 kg – 180 kg (11.02 lbs – 396.83 lbs) ▪ Three-point Calibration: 40 kg / 100 kg / 160 kg (88.18 lbs / 220.46 lbs / 352.74 lbs) — zeroing via direct pressure calibration weights ▪ Accuracy: <ul style="list-style-type: none"> - 5–60 kg: ±0.2 kg (11.02–132.28 lbs: ±0.44 lbs) - 60–120 kg: ±0.3 kg (132.28–264.55 lbs: ±0.66 lbs) - 120–180 kg: ±0.4 kg (264.55–396.83 lbs: ±0.88 lbs) ▪ Weight Memory: Retains up to 300 g (0.66 lbs) measurement value within 30 seconds after shutdown

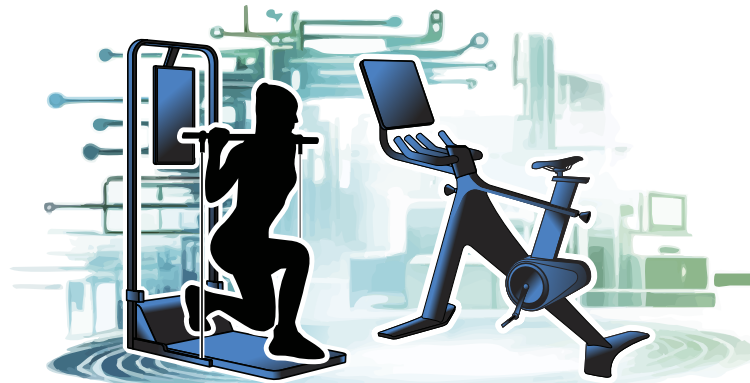
Features & Capabilities

his product is a smart eight-electrode body composition scale supporting both Bluetooth and Wi-Fi connectivity. It features an LED display interface and offers precise measurement of key body metrics including:

- Weight
- Obesity Level
- Basal Metabolic Rate (BMR)
- Body Age
- Body Fat Percentage
- Skeletal Muscle Mass
- Body Water Percentage
- Body Mass Index (BMI)
- Bone Mass
- Protein Level

Additionally, the scale supports segmental fat and muscle analysis, and can estimate body circumference data, providing users with comprehensive body composition monitoring and health insights.

— SMART HOME GYM —



SmartGym.nu

— NEXT-GEN AI FITNESS —